



**ARTS UMBRELLA**

# EVENTS & RENTAL GUIDE

[rentals@artsumbrella.com](mailto:rentals@artsumbrella.com) | 1400 Johnston St., Vancouver, BC, V6H 3S1



Arts Umbrella's home on Granville Island is situated on the unceded, traditional, and ancestral territories of the xʷməθkʷəy̓əm (Musqueam), Skwxwú7mesh Úxwumixw (Squamish), and səliłwətaʔ (Tsleil-Waututh) peoples.

Arts Umbrella is where young artists ages 2–22 cultivate their creativity in Art & Design, Dance, and Theatre, Music & Film. As a non-profit centre for arts education, we believe that art is powerful. Powerful enough to change childrens' lives in incredible ways. When young people connect with the arts, they gain self-confidence, develop self-discipline, and discover creative expression—qualities they carry with them for life.

# INSPIRING CREATIVITY. FOR GOOD.

In April 2021, we opened the doors to our striking new 50,000 square-foot complex on Granville Island, one of Vancouver’s most recognizable art and culture hubs. Originally designed in 1995 by the award-winning Vancouver firm Patkau Architects, the former south campus of Emily Carr University of Art + Design was subsequently reimagined by Henriquez Partners Architects to support Arts Umbrella’s unique mandate and needs.

The state-of-the-art facility boasts a 132-seat theatre with specialized technical equipment, ten art and design studios, six dance studios, four theatre, music, and film studios, flexible art exhibition and reception spaces, outdoor terraces, a scene shop dedicated to stagecraft, set, and prop construction, a ceramics studio, and a chemical darkroom. Purpose-built for educating young people in the arts,

the building also offers an inspiring backdrop for use by local theatre companies, film & television production, and business and community groups requiring meeting or event spaces. Windows and skylights throughout the building afford spectacular views of Granville Island, False Creek, and the city beyond.

Through our rental program, we aim to cultivate community in a new way, continuing to expand our role as a vital member of the Granville Island and greater Vancouver arts ecosystem. We are proud to be building a dynamic rentals program that has already played host to a wide range of arts organizations, educational groups, and corporate businesses. Our passionate and innovative team strives to create an experience that is memorable and utterly original.

---

## TABLE OF CONTENTS

Performing Arts Spaces ..... 04

Event Spaces ..... 11

Meeting Rooms & Studios ..... 17

Floorplans ..... 24

Logistics ..... 27

Suggested Partners ..... 28

For all inquiries and rates,  
please contact  
[rentals@artsumbrella.com](mailto:rentals@artsumbrella.com)

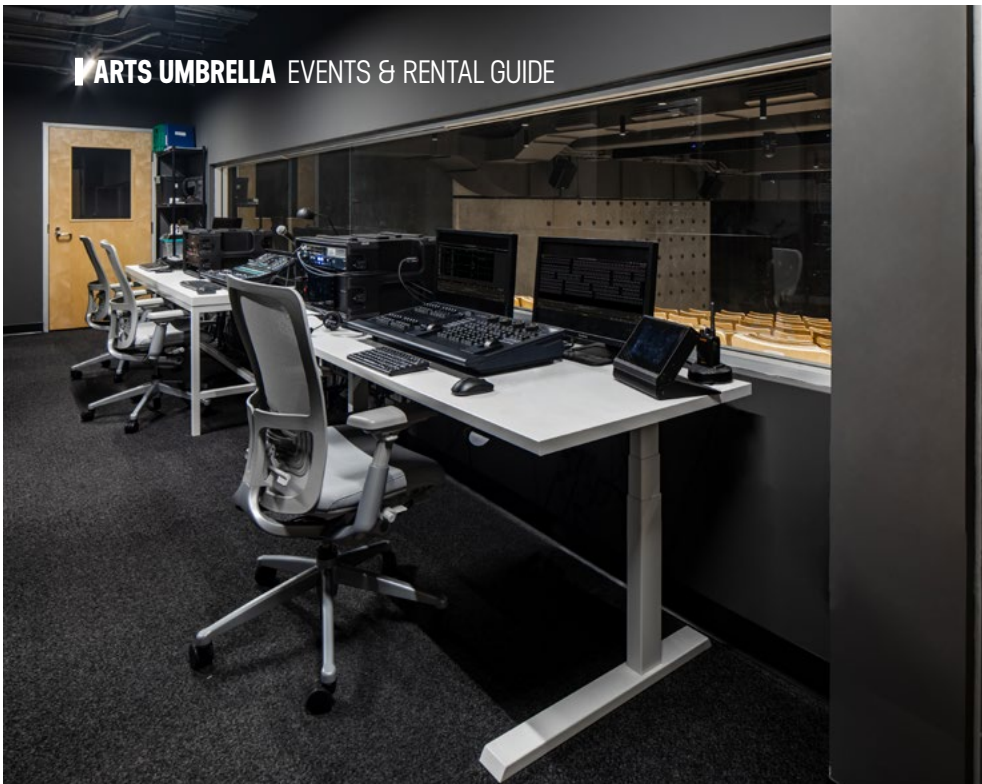


# PERFORMING ARTS SPACES

# JACK AND DARLENE POOLE THEATRE

Whether it is used for a play, musical, concert, meeting, or lecture, the Jack and Darlene Poole Theatre is your ideal venue. This 132-seat theatre sits in the heart of the Arts Umbrella building, with its main entry located in the Atrium, which can be used as a lobby or extended event space. The nearby kitchen/bar and green room make a theatre rental complete.





## PERFORMING ARTS SPACES

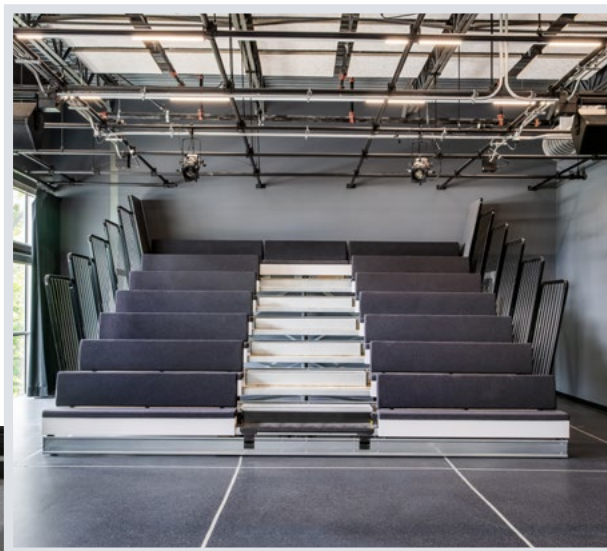
# JACK AND DARLENE POOLE THEATRE

### FEATURES

- 132 seats
- Backstage ramp provides performer access to the stage from the green room
- Personnel lift provides wheelchair access to control booth – not for equipment or theatre patrons
- Sennheiser hearing assist system
- Stage floor is sprung with black vinyl surface
- Stage is accessed from green room via rear stage doors and from the atrium
- Technical grid height: approximately 12'
- Theatre features digital audio, video, lighting and projection
- Video projector can be focused on retractable rear projection screen or upstage cyclorama
- Users can access the audio & projection systems via the control booth or from the stage floor
- Adjustable black masking & traveler curtains
- Audio paging from control booth to stage and backstage
- Livestream capabilities
- Audience Capacity: 132
- Stage Capacity: 88
- Stage area without masking: approx. 40' wide x 35' deep (1400 sq. ft.)
- Stage area with masking: approx. 24' wide x 34' deep (816 sq. ft.)
- Audience area: 1375 sq. ft.

\*Full technical data available upon request





## PERFORMING ARTS SPACES

# BARRY AND DRINDA SCOTT STUDIOS 401/402

This intimate studio works well for rehearsals, performances, or meetings. Retractable seating and a folding air wall make this space especially versatile. When the masking drapes are pulled back, floor to ceiling windows give way to an east-facing view of Granville Island and the city.

### FEATURES

- Sprung floor with grey vinyl surface
- Technical grid height: approximately 12'
- Retractable seating system with seating for approximately 36
- Studio 401/402 subdivided by white ModernFold Paired-panel Acousti-Seal operable partition system
- Blackout stage drapes available to mask side walls and create crossover
- Equipped with audio & lighting systems
- Yamaha AvantGrand digital/acoustic 88 key Hybrid Piano - model N3X
- Equipped with video projector and retractable projection screen

### Studio 401

- Reception: 60 / Dining: 40
- Area: 903 sq. ft.

### Studio 402

- Reception: 60 / Dining: 48
- Area: 1352 sq. ft.



# NORMA BRYSON STUDIO 309

---

## FEATURES

- Perfect for theatre or dance rehearsals, or smaller meetings
- Suited to use as overflow backstage space for theatre events
- Sprung floor with grey vinyl surface
- Equipped with audio & lighting systems
- Tie lines to Jack and Darlene Poole Theatre audio & video systems
- Program sound and paging feed from Jack and Darlene Poole Theatre
- Access to private outdoor terrace
- Reception: 60 / Dining: 40
- Area: 764 sq. ft.



# ANDREW MAHON FOUNDATION GREEN ROOM

## FEATURES

- 5 curtained dressing booths with mirrors
- Seating for 18 at dressing tables with switchable warm/cool vanity lighting
- Lounge area with seating for 5
- Locker room with 22 lockers – users must provide their own lock
- 2 restrooms, 1 shower room
- Washer, dryer, refrigerator, microwave, and dishwasher
- Program sound and paging feed from Jack and Darlene Poole Theatre
- Video net tie line from Jack and Darlene Poole Theatre
- Reception: 60 / Presentation: 30
- Area: 490 sq. ft. (including dressing cubicles, toilets, shower, kitchen & lounge)





# JOHN VAN BUREK SCENE & DESIGN SHOP

---

## FEATURES

- Space for set construction, assembly and painting
- Shop machinery includes table saw, panel saw, compound miter saw, drill press, belt sander, grinder, compressed air system, dust extraction system, various power and hand tools
- Cleanup sink
- Ventilated paint booth
- Wall mounted E-Stop buttons in shop and shop office
- ClearCom system tie lines from the Jack and Darlene Poole Theatre to shop office
- West-facing scene shop features views of Granville Island, False Creek, & the Granville St. Bridge
- Maximum Capacity: 24
- Area: 825 sq. ft.





# EVENT SPACES



# DAVID AISENSTAT ATRIUM

The central Atrium affords breathtaking views of the interior of the facility, as well as the charming surroundings of Granville Island and False Creek. Soaring windows, stairways, bridges and mezzanines are an inspiring backdrop to any event.

---

## FEATURES

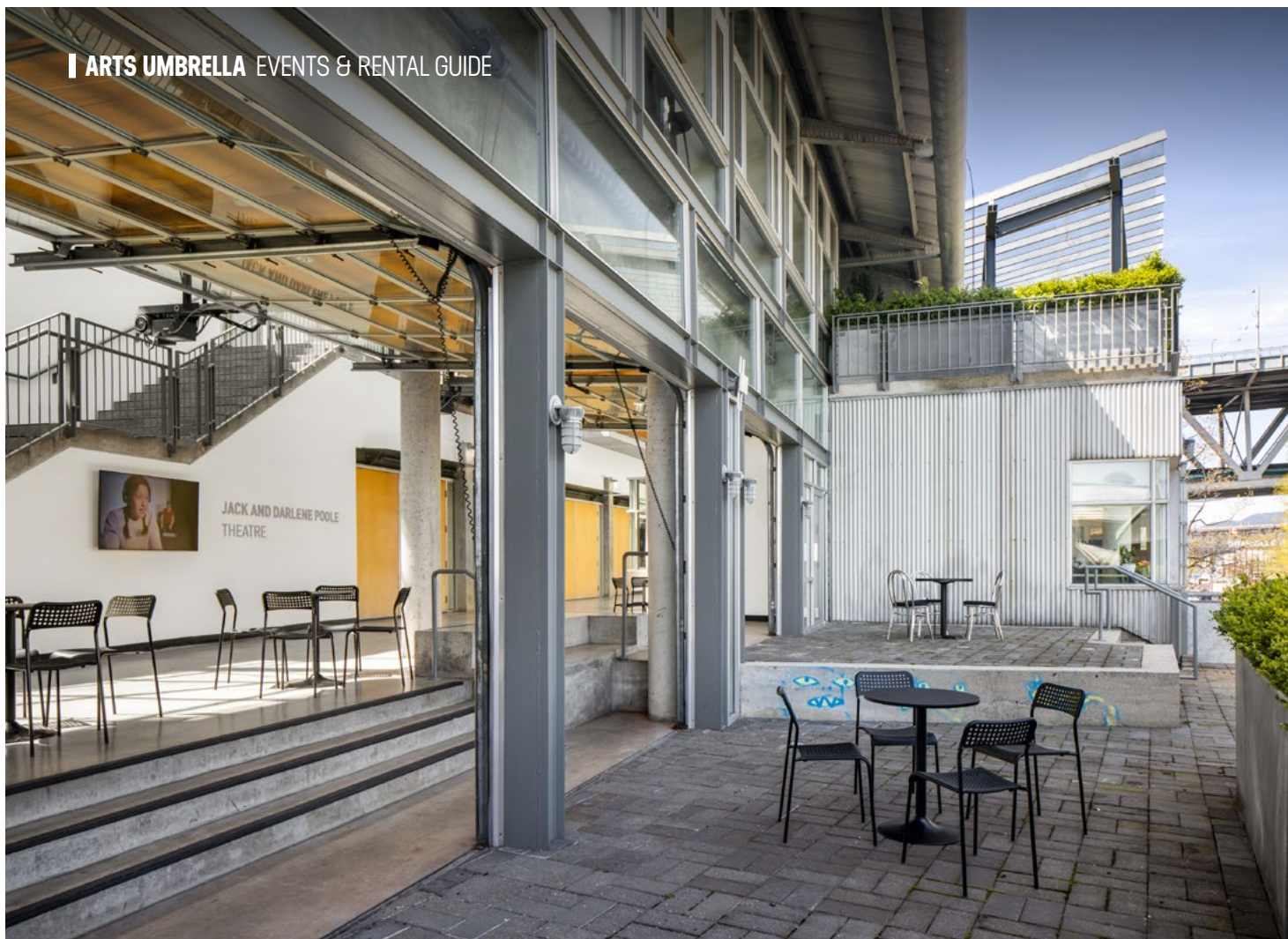
- Arts Umbrella's largest, most versatile event space is perfect for receptions, photoshoots, galas, dinners, weddings, cocktail parties, and concerts
- Sitting adjacent to the Jack and Darlene Poole Theatre and the third floor bar and kitchen, the atrium also serves as lobby to theatre events
- Skylights and windows provide lots of natural light
- Garage doors open to the outdoor terrace
- Wall-mounted monitor can feature headshots, event information, welcome graphics, or live feed from inside the theatre
- Reception: 343 / Dining: 40
- Area: 1480 sq. ft.



# ATRIUM TERRACE

## FEATURES

- Patio space with garage-style doors
- North facing, third floor view of Granville Island, False Creek & Downtown Vancouver
- Reception: 166 / Dining: 24
- Area: 717 sq. ft.





# BMO FINANCIAL GROUP ROOFTOP TERRACE

---

## FEATURES

- Covered rooftop patio with north-facing views of Granville Island, False Creek & Downtown Vancouver
- Connects to BMO Financial Group Room (Studio 410) via sliding glass door
- Reception: 60 / Dining: 32
- Area: 920 sq. ft.



# NEWMONT FOYER

---

## FEATURES

- The hub of Arts Umbrella's Student Services at the ground floor entrance to the building, the Newmont Foyer is an open concept space with windows and skylights providing natural light
- When combined with the adjacent Cassils | Henriquez Gallery and kitchen/bar, this is an ideal reception space
- Reception: 99 / Dining: 16
- Area: 1329 sq. ft. (including Cassils | Henriquez Gallery)



# CASSILS | HENRIQUEZ EXHIBITION GALLERY

---

## FEATURES

- Ample floor and wall space, combined with significant ceiling height afford plenty of room to install 2D, 3D, and media artworks
- When combined with the Newmont Foyer and the adjacent kitchen/bar, this ground floor gallery is an ideal reception space
- Reception: 209 / Dining: 48
- Area: 1329 sq. ft. (including Newmont Foyer)





A modern, open-plan meeting room and studio. The space features large windows on the left side, providing a view of greenery outside. The interior is furnished with several long, white, adjustable tables and modern, light-colored chairs. The ceiling is high and industrial, with exposed ductwork and long, rectangular light fixtures. On the right side, there are white storage cabinets and shelves. The floor is a smooth, light-colored concrete. The overall atmosphere is bright and professional.

# MEETING ROOMS & STUDIOS



# PETER AND JOANNE BROWN MEETING ROOM

---

## FEATURES

- Ideal for meetings and conferences
- Equipped with large video monitor with audio and video interface
- Large 4' x 15' board room table with room for 18 seated
- Reception: 60 / Presentation: 32
- Area: 499 sq. ft.



# BMO FINANCIAL GROUP BOARDROOM 410

---

## FEATURES

- Ideal for rehearsals, classes, workshops, and meetings
- Blue chroma key wall for filming
- Access to private rooftop terrace via sliding glass door
- Grey vinyl floor surface
- Equipped with audio and video projection systems
- Reception: 143 / Dining: 32
- Area: 619 sq. ft.



# ARTHUR AND ANCIE FOUKS STUDIO 301

Arts Umbrella is home to 10 Art & Design studios that can be easily reconfigured to accommodate meetings, workshops, rehearsals, or other purposes. Each comes with a sink, counters, tables, and chairs.

---

## FEATURES

- Arts Umbrella's largest Art & Design studio
- Equipped with wall-mounted monitor
- Floor to ceiling windows with third floor east-facing view of Granville Island
- Reception: 60 / Dining: 48
- Area: 1128 sq. ft



# STRAT AND GAYE LEGGAT DARKROOM STUDIO 308

## FEATURES

- One of Vancouver's last remaining chemical darkrooms
- 8 Beseler Enlargers
- Fully ventilated
- Maximum Capacity: 12
- Area: 270 sq. ft.



# DEE DEE MACLACHLAN STUDIO 409

---

## FEATURES

- 8 electric clay-throwing wheels
- 2 Tucker's Cone Art Kilns
- Maximum Capacity: 30
- Area: 850 sq. ft



# DIAMOND FOUNDATION STUDIO 407

Arts Umbrella houses six spacious dance studios. Each studio features plenty of natural light, high ceilings and windows, mirrors, ballet barres, retractable window blinds, and mirror coverings. Each studio has a sprung floor and dedicated audio system.

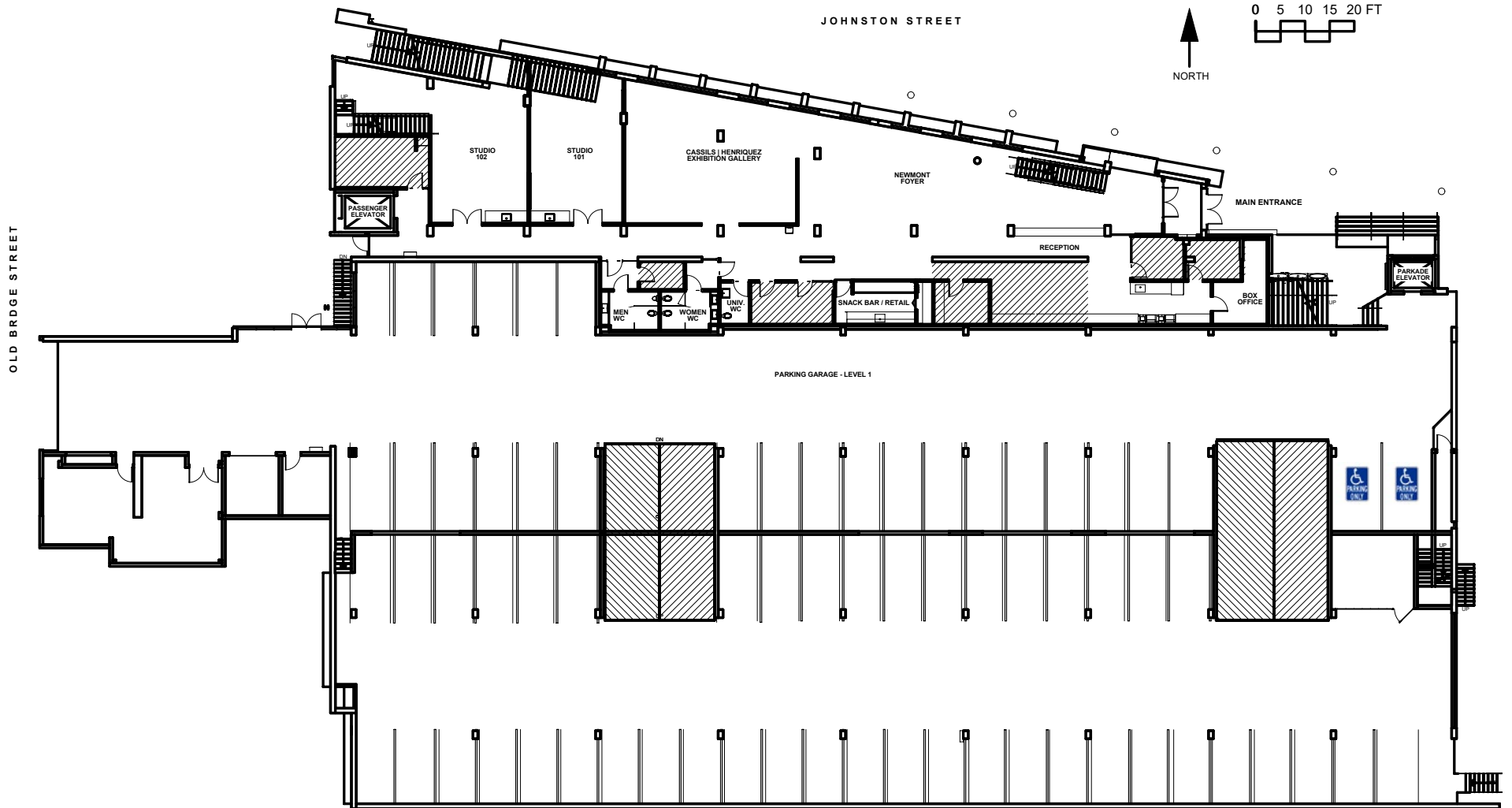
---

## FEATURES

- Grey dance floor
- Large, south-facing windows and skylights
- Mirrors on three walls with automated window coverings
- Dual-level ballet barres on four walls
- Audio systems with four speakers and convenient user interface and controls
- Baby grand piano
- Reception: 60 / Dining: 56
- Area: 2553 sq. ft.

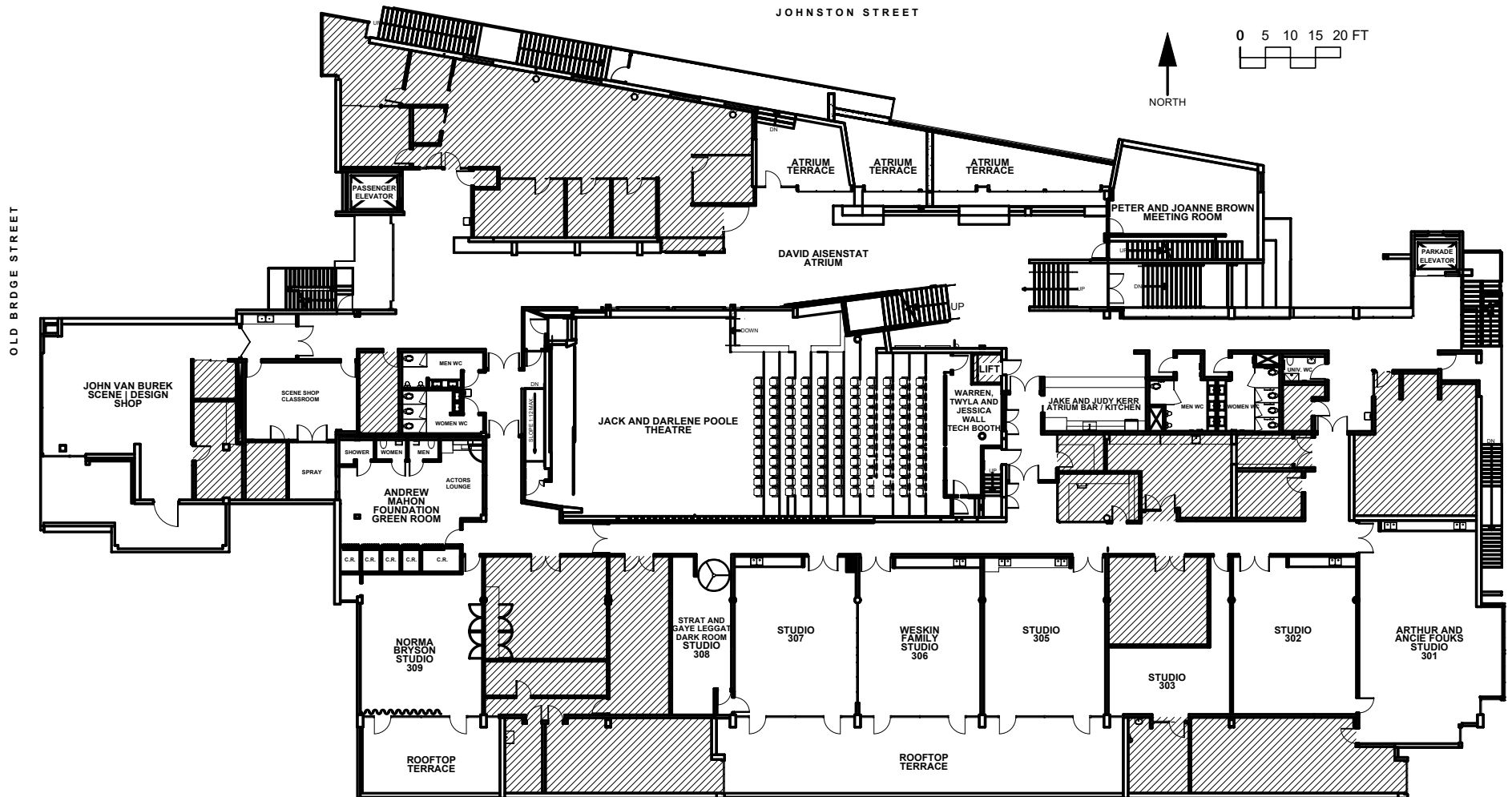


# FLOORPLAN LEVEL 1



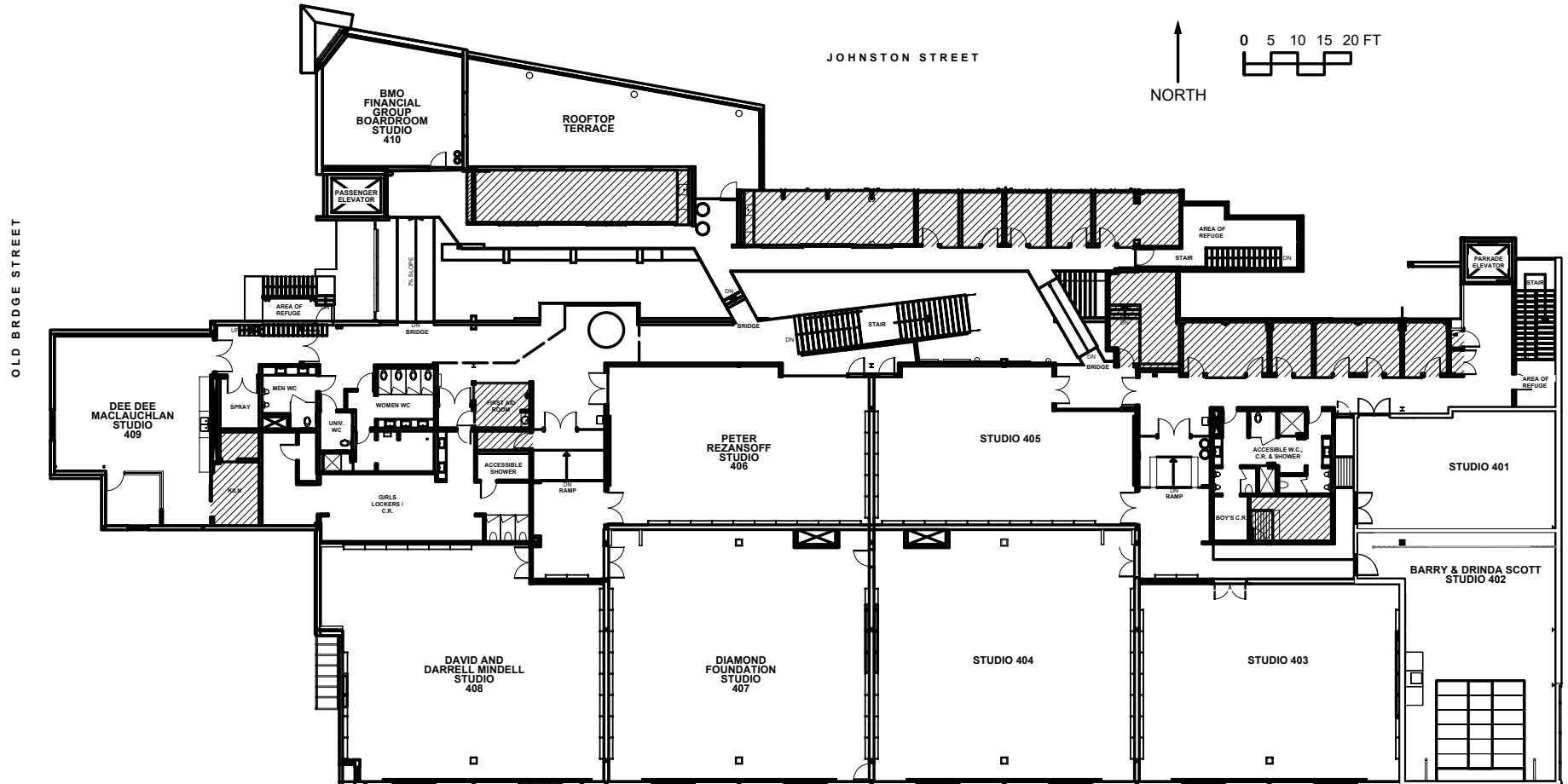


# FLOORPLAN LEVEL 3

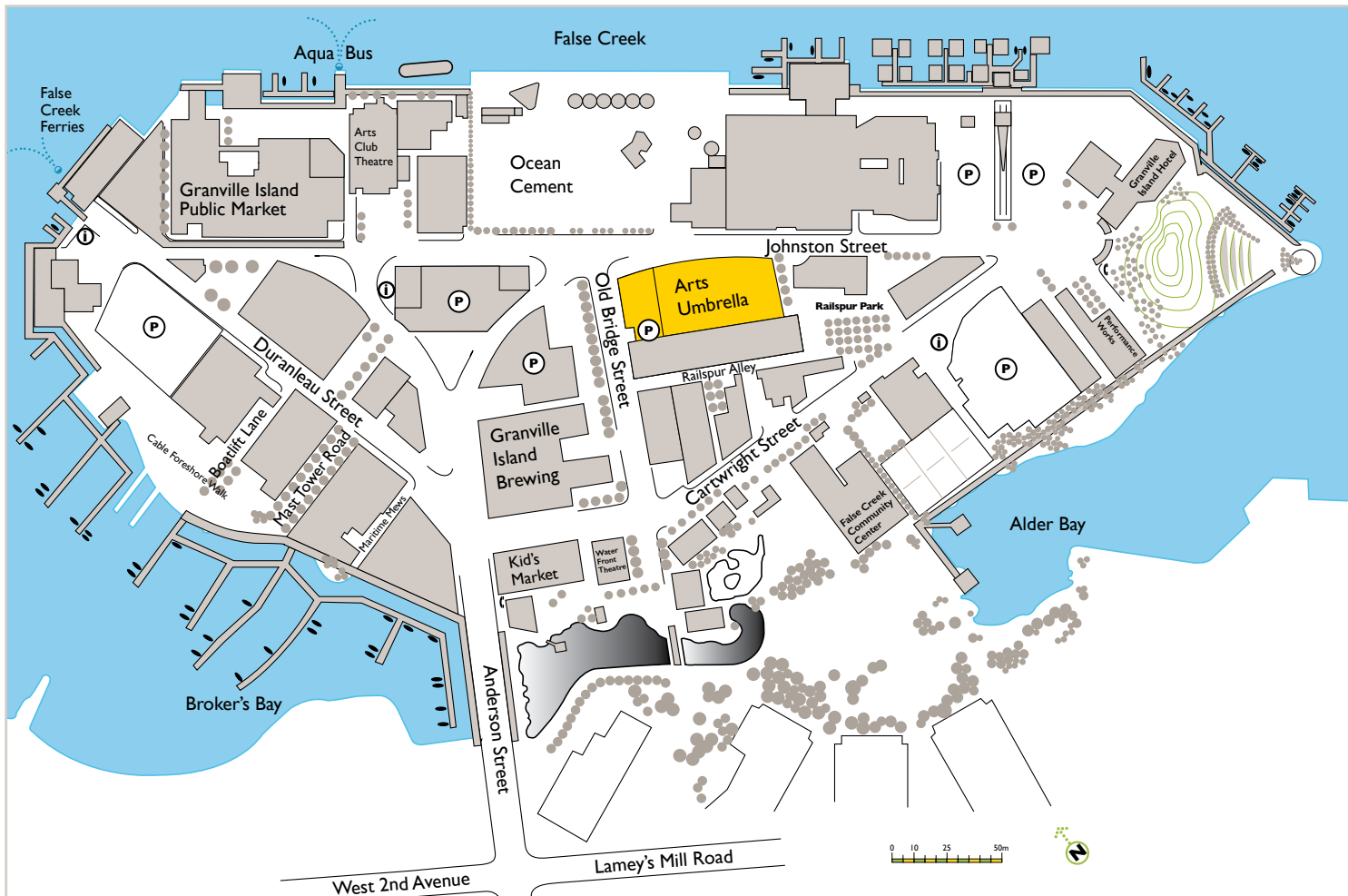




# FLOORPLAN LEVEL 4







# LOGISTICS

## PARKING

Parking is available on Granville Island. Pay parking is in effect between the hours of 11am and 6pm, 7 days a week. Covered parking is available in the parkade that immediately adjoins the Arts Umbrella with access from Old Bridge Street. Access from the parkade to the Arts Umbrella main entrance is on the ground floor, in the North East corner.

## LOADING

Delivery vehicles can park in reserved Arts Umbrella drop-off parking on Johnston Street only while actively loading into the building, after which vehicles must be parked elsewhere on Granville Island, and pay any relevant parking charges.

## ELEVATOR

Maximum Capacity 4,000lbs. Dimensions: 5' wide x 7' high x 8'-6" deep. The elevator is in the Northwest corner of the building, with direct exterior access from Johnston Street.

## WIFI

Access to Arts Umbrella's guest Wi-Fi network available upon request. Should you require dedicated Wi-Fi you are welcome to bring your own mobile hotspot.

## ACCESSIBILITY

For information about accessibility at Arts Umbrella, please visit [www.artsumbrella.com/accessibility-and-learning-supports/](http://www.artsumbrella.com/accessibility-and-learning-supports/)



# SUGGESTED PARTNERS:

---

## CATERING



info@bonvivantcatering.ca  
604-921-2665 (COOK)



info@tracksbistro.ca  
604-689-8700

---

## BEER

**STRANGE FELLOWS** *Brewing*

info@strangefellowbrewing.com  
604-215-0092

---

## WINE



pierre@libertywinemerchants.com  
604-602-1120

---

## SIGNAGE & PRINTING



tph015@tph.ca  
604-738-7131

---

## HOSPITALITY



reservations@granvilleislandhotel.com  
604-683-7373

---

## FURNITURE RENTALS:



THE CELEBRATION EXPERTS

sales.vancouver@pedersons.com  
604-879-581



sales@abpartytime.com  
604-879-5281

---

## AUDIO VISUAL AND LIGHTING SERVICES



info@showtechavl.com  
604-620-9220



sales@sapphiresound.ca  
1-888-850-8168

---

## PHOTOGRAPHY

### Fuoco Photography

jamie@jamieleefuoco.com  
@fuoco.photography

### MJ Photography

michael.san.felipe@gmail.com  
@initialsmsf

---

## MUSIC

### Benjamin Millman



#### For live music:

benjaminmillmanmusic@gmail.com  
778-318-5918  
@benjaminmillmanmusic

#### For DJ:



spinoffdj@gmail.com  
778-318-5918

### Olin Brix

olinbrix@gmail.com  
@olinbrix

